

Figure 1. RHEED of elemental uranium films taken during growth. Final two images are at the end of a 60min deposition, rotated by 45°

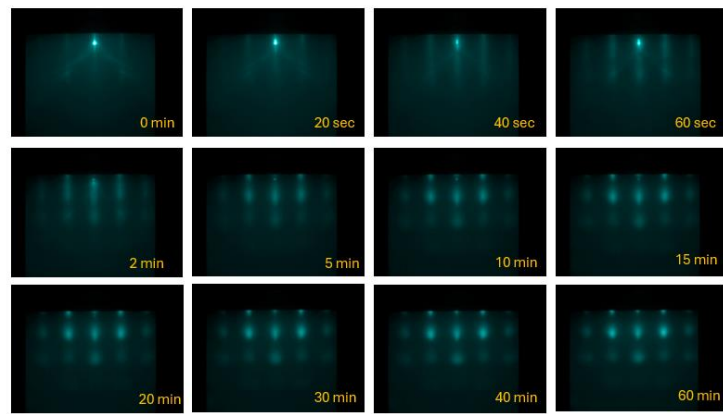


Figure 2. RHEED taken throughout growth with simultaneous exposure of uranium and nitrogen

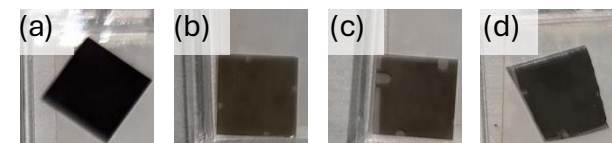


Figure 3. Images of U+N samples after removal from vacuum chamber (a) without (a) and with (b-d) capping layers. Color changes in (b-d) due to the use of various different growth parameters.

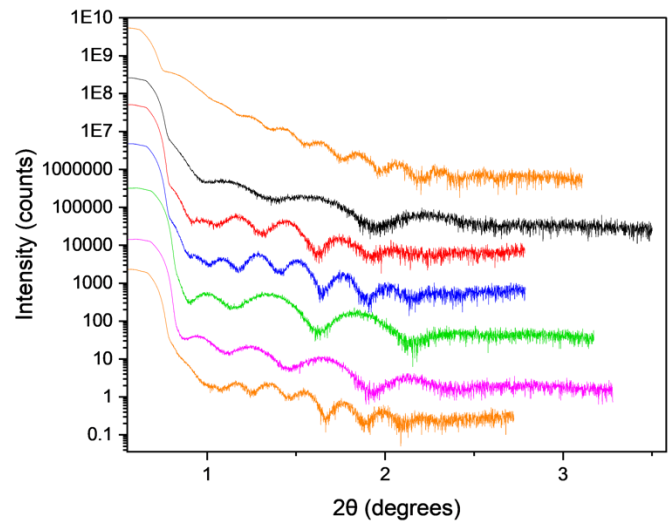


Figure 4. X-ray reflectivity measurements of depositions with equal deposition times but varying growth parameters

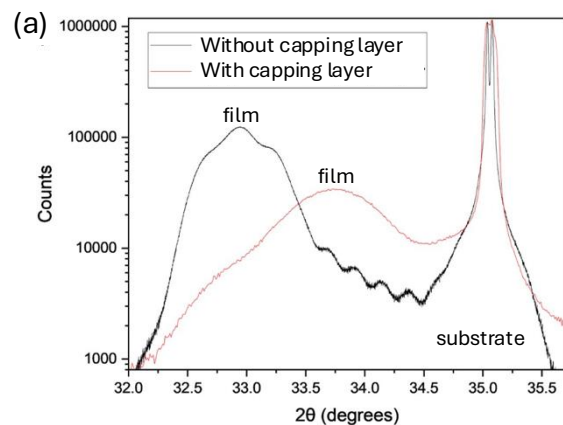


Figure 5. (a) 2θ - ω X-ray diffraction scans of U+N depositions with (out) a protective capping layer. (b) Phi scan and (c) pole figures of samples (1) without and (2) with capping layer showing epitaxial registry.

