

Figure 1 Samples structure (a), and description of the shutters sequence employed in the alternated growth process (b).

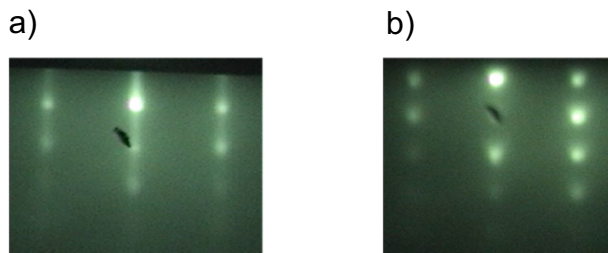


Figure 2 RHEED patterns corresponding to the samples grown with the (a) continuous method and, (b) alternating method.

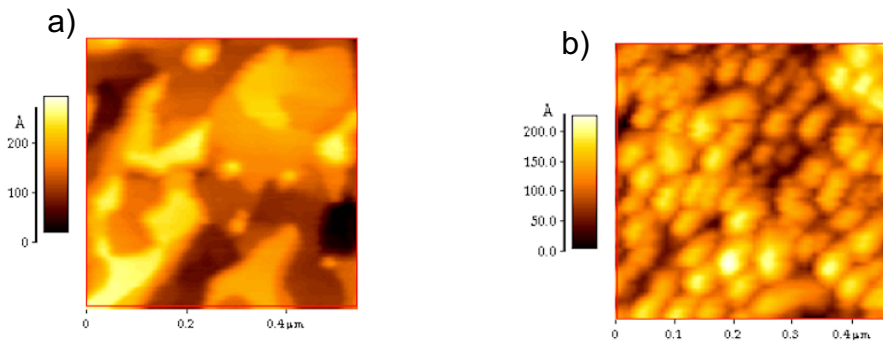


Figure 3 AFM surface micrographs of samples grown using (a) continuous- and (b) alternated growth process.

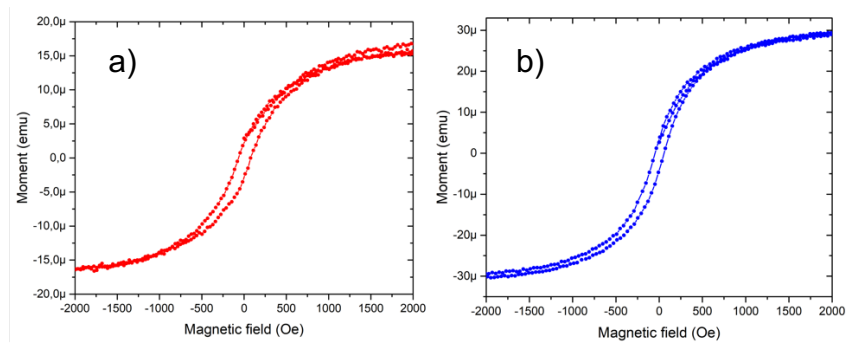


Figure 4 Magnetization curves at 300 K corresponding to the samples prepared with (a) the continuous growth, and (b) the alternating growth process.