

Figure 1: PCSEL fabrication by epitaxial regrowth (A-C) and non-regrowth (D-F).

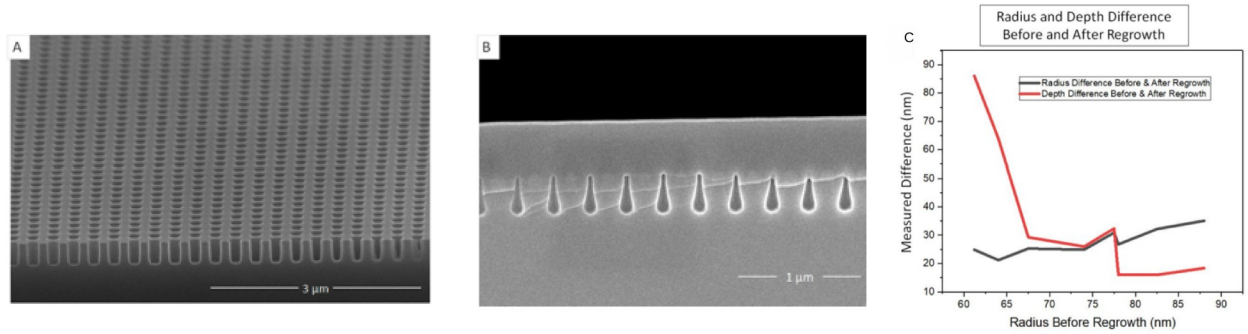


Figure 2: Regrowth influence to void morphology. A) SEM of PC cross-section before regrowth. B) SEM of PhC cross section after regrowth. C) Radius difference before and after regrowth and depth difference before and after regrowth plotted against pre-regrowth radius.

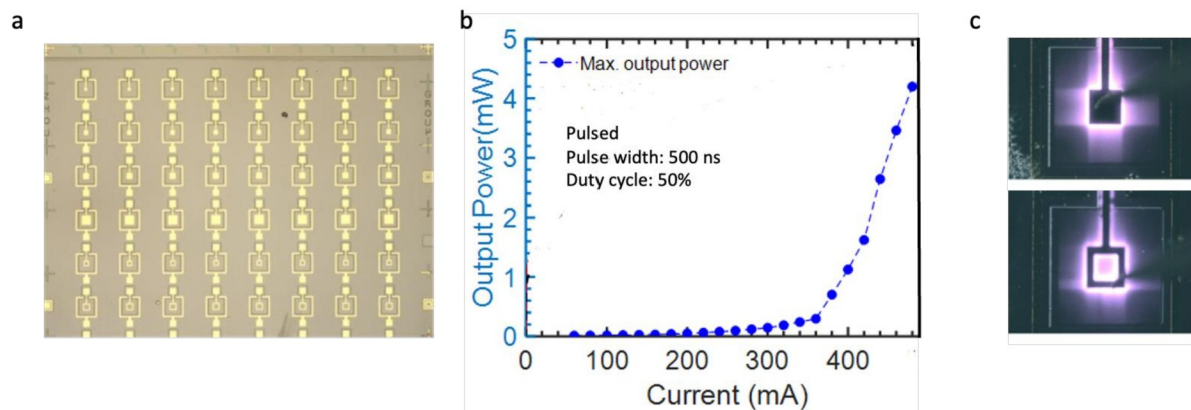


Figure 3: Electrically injected PCSEL. a) PCSEL surface after patterning, regrowth, and processing with electrical contacts. b) LI measurement of electrically injected PCSEL. c) Electroluminescence from PCSEL surface.