

Fig. 1: A new strategy for the blood analytical biosensing platform with self-assembled silica nanobead-packed column.

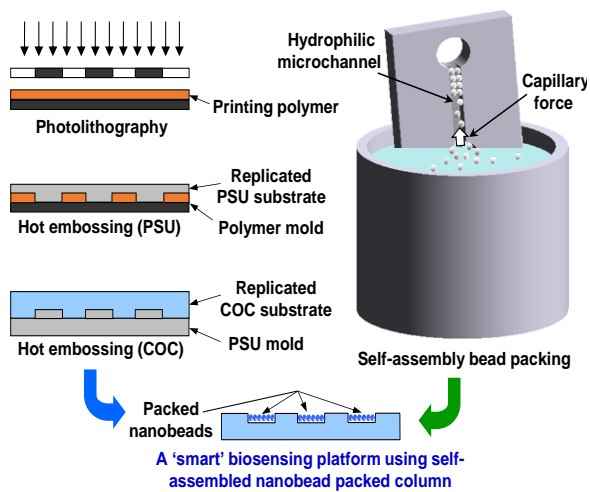


Fig. 2: Fabrication procedure for a biosensing platform with self-assembled silica nanobead-packed column.

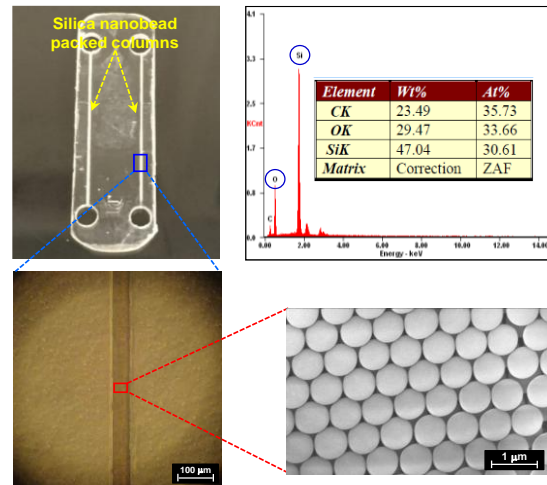


Fig. 3: Captured images of the fabricated biosensor and an assembled image of the column by scanning electron microscopy. Energy dispersive spectrometry was performed over the self-assembled nanobead column.

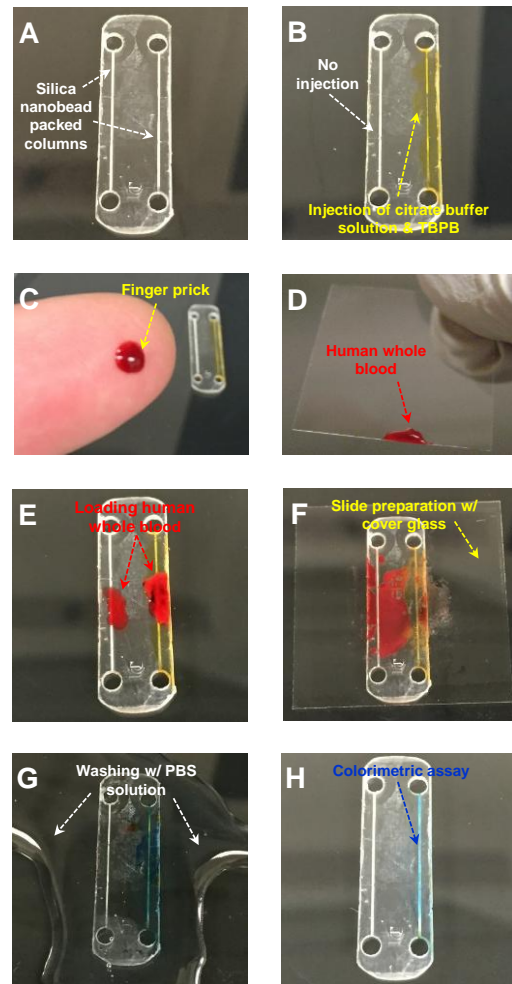


Fig. 4: The biosensing capability of the nanobead-packed column was demonstrated by a capillary-driven lateral flow colorimetric assay.