

Supplementary page

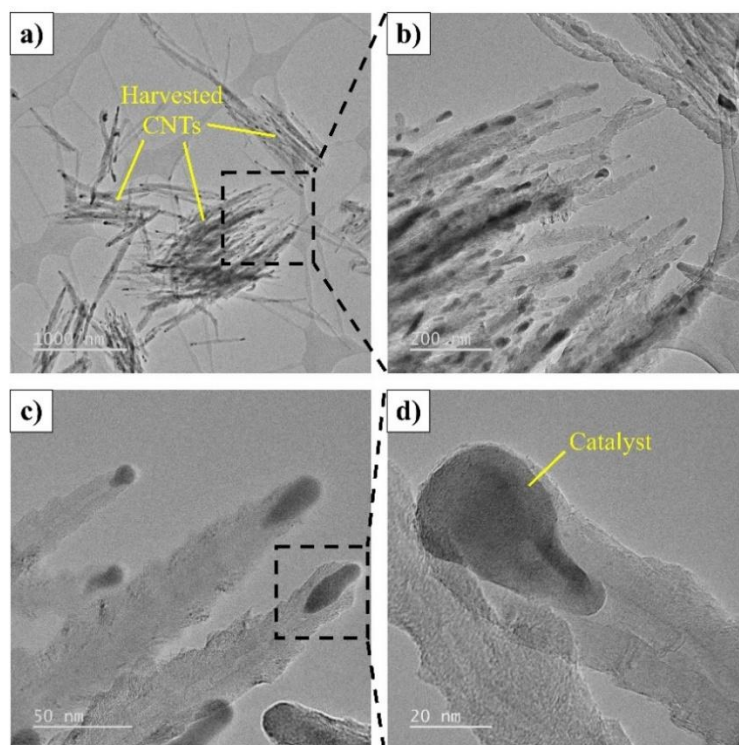


Fig. 1. TEM images of the bamboo-like carbon nanotubes obtained on the EN 1.4301 (AISI 304) steel sample oxidized at 500 °C for 3 min.

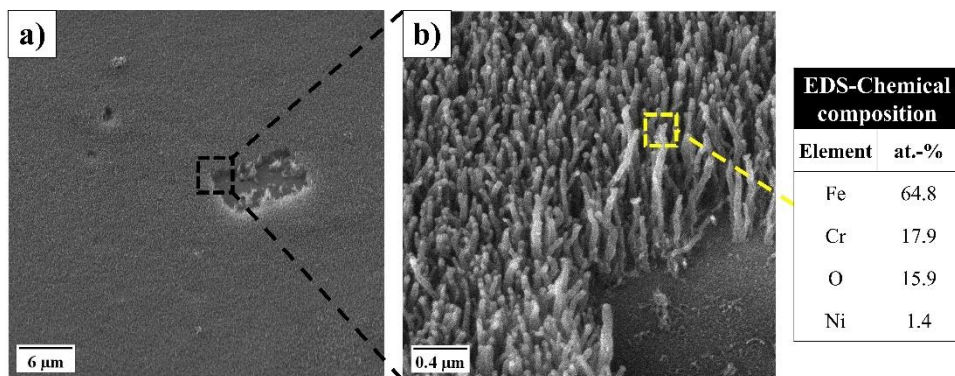


Fig. 2. SEM images showing an almost complete coverage of the steel surface with CNTs (a) and (b) revealing a detailed view of the bamboo-like carbon nanotubes obtained on the steel samples oxidized at 500 °C for 3 min including the chemical composition of the catalyst particles.

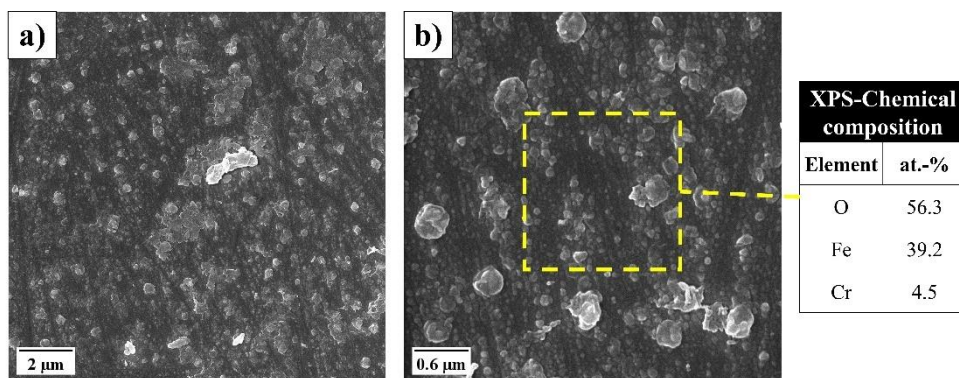


Fig. 3. SEM images of the surface of the EN 1.4301 (AISI 304) steel sample oxidized at 500 °C for 3 min including chemical composition.