

Supplementary Information

Effect of SiO_x/rGO via phosphorus doping as anode materials for Lithium-ion batteries

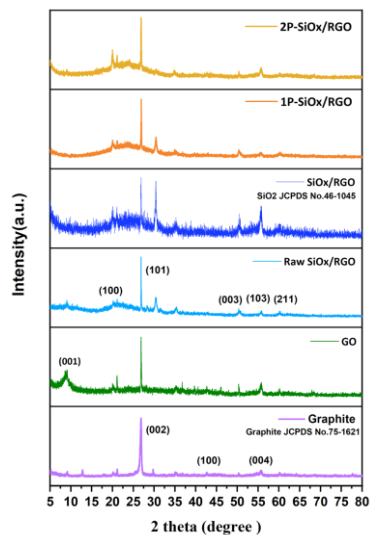


Fig. S1. XRD patterns of SiO_x/rGO.

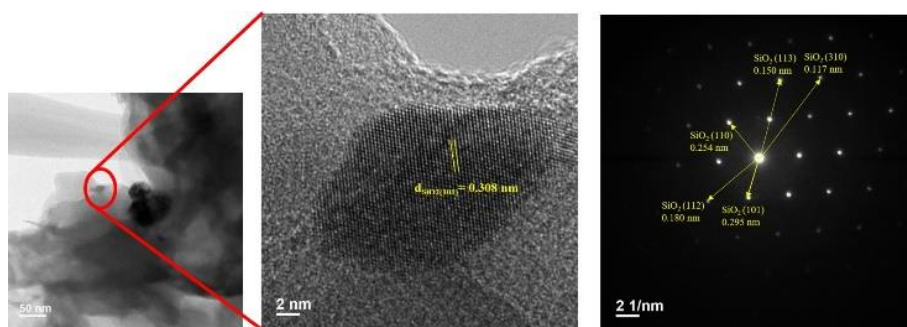


Fig. S2. TEM image and diffraction pattern of 2P-SiO_x/rGO.

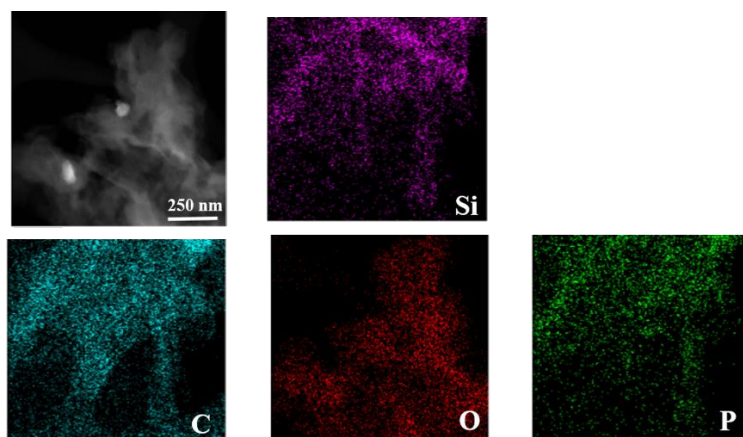


Fig. S3. Dark-Field STEM image and EDS of 2P-SiO_x/rGO.

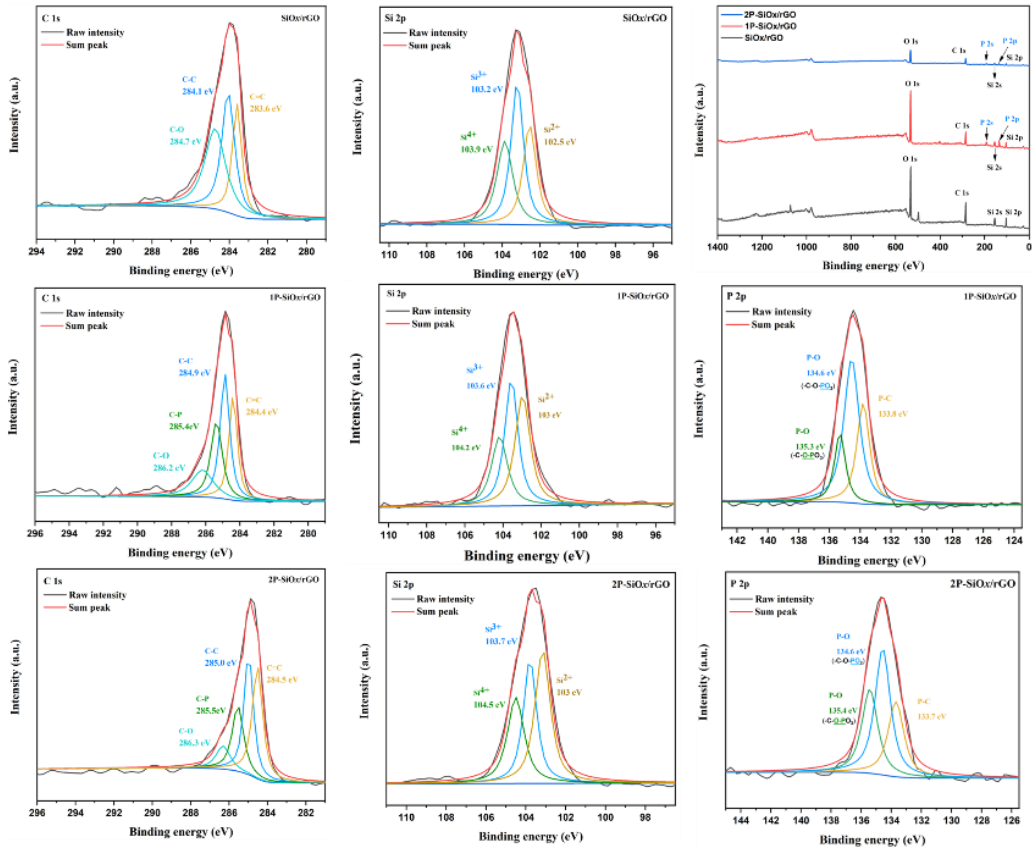


Fig. S4. XPS spectra for C 1s, Si 2p and P 2p of pristine, 1P and 2P-doped SiO_x/rGO.

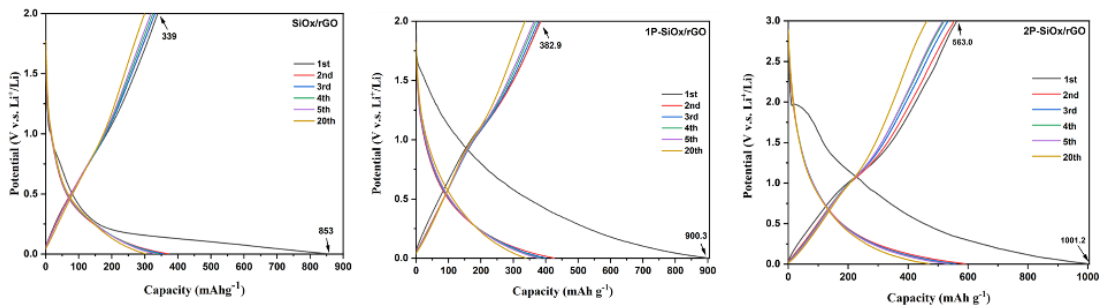


Fig. S5. Charge/ Discharge voltage profiles of pristine, 1P and 2P-doped SiO_x/rGO.

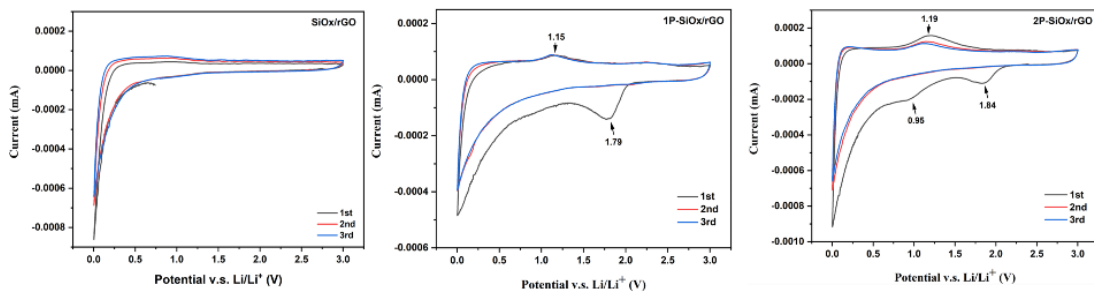


Fig. S6. Cyclic voltammograms of the pristine, 1P and 2P-doped SiO_x/rGO electrode.