

Figure 1. Fabrication flow chart with SEM images from each process (a) GLAD natural seeds plantation; (b) Growth of nanoscale protrusions; (c) capping; (d) inverting.

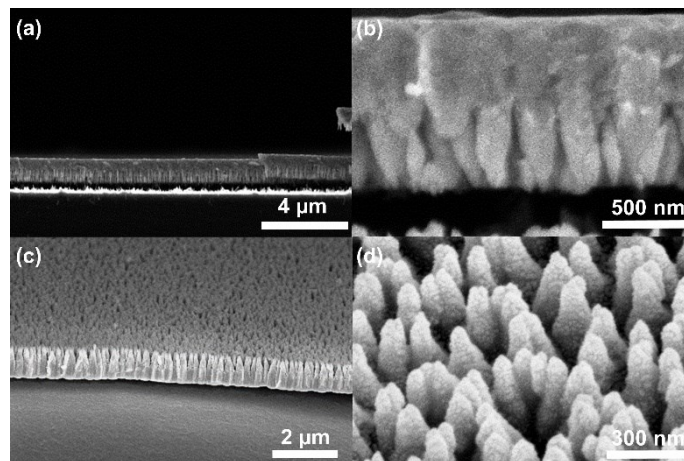


Figure 2. SEM images of the antimicrobial samples SEM images of sample (85°) (a)-(b) after capping; (c)-(d) after inverting.



Figure 3. Water contact angle measurement of the antibacterial sample

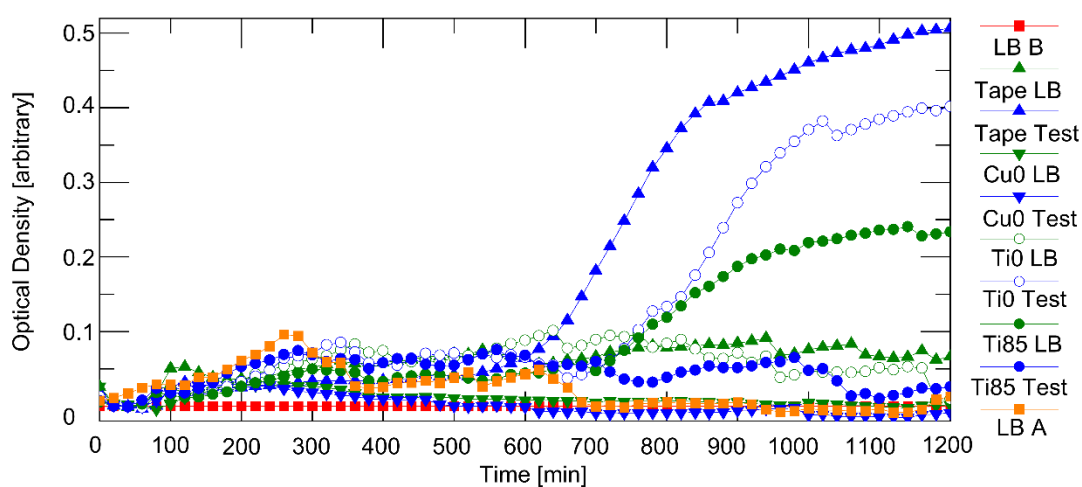


Figure 4. Growth curve on antimicrobial samples (Ti85).

#### References

- [1] A. Hayles, J. Hasan, R. Bright, D. Palms, T. Brown, D. Barker, and K. Vasilev, *Mater. Today Chem.* **22**, 100622 (2021).
- [2] E.P. Ivanova, J. Hasan, H.K. Webb, V.K. Truong, G.S. Watson, J.A. Watson, V.A. Baulin, S. Pogodin, J.Y. Wang, M.J. Tobin, C. Löbbe, and R.J. Crawford, *Small* **8**, 2489 (2012).
- [3] T. Liu, Q. Cui, Q. Wu, X. Li, K. Song, D. Ge, and S. Guan, *J. Phys. Chem. B* **123**, 8686 (2019).
- [4] A. Valiei, N. Lin, J.F. Bryche, G. McKay, M. Canva, P.G. Charette, D. Nguyen, C. Moraes, and N. Tufenkji, *Nano Lett.* **20**, 5720 (2020).
- [5] C. Qu, J. L. Rozsa, H-J. Jung, A. Williams, E. Markin, M. P. Running, S. McNamara, K. M. Walsh, *Scientific Reports* (2022, to be published)