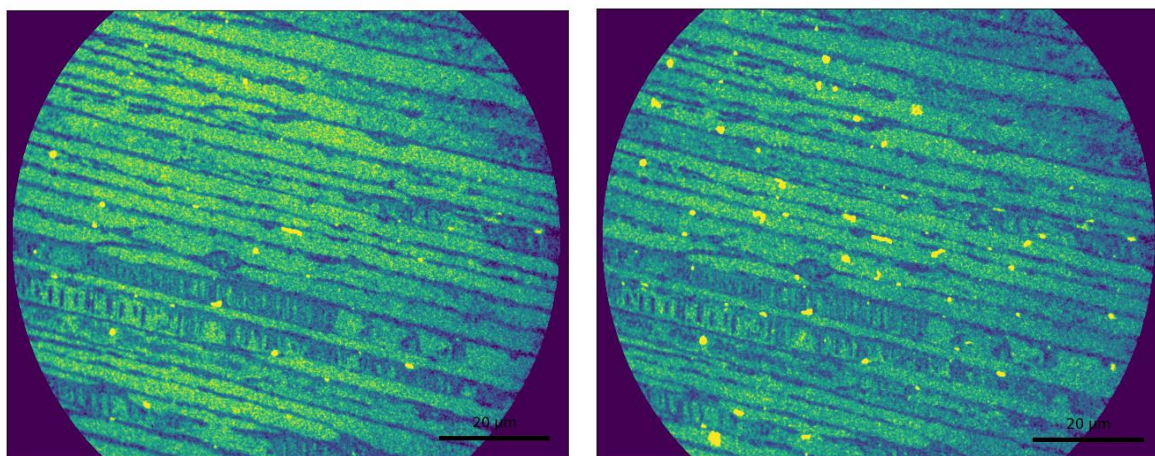


*Fig. 1. Schematic of the full-field PEEM imaging which uses photons to eject photoelectrons (not to scale).*



*Fig. 2. Images of the intercalated 2D Ag epitaxial graphene surface where Ag (in yellow) before (left) and after (right) heating at 300°C for ~30 minutes. Scale bar in both images is 20 μm.*