

Silver iodide – surface structure and ice nucleation investigated by noncontact AFM

J. I. Hütner,¹ D. Kugler,¹ F. Sabath,² M. Schmid,¹ A. Kühnle,² U. Diebold,¹ J. Balajka¹

¹Institute of Applied Physics, TU Wien, Vienna, 1040, Austria

²Department of Chemistry, Bielefeld University, Bielefeld, 33615, Germany

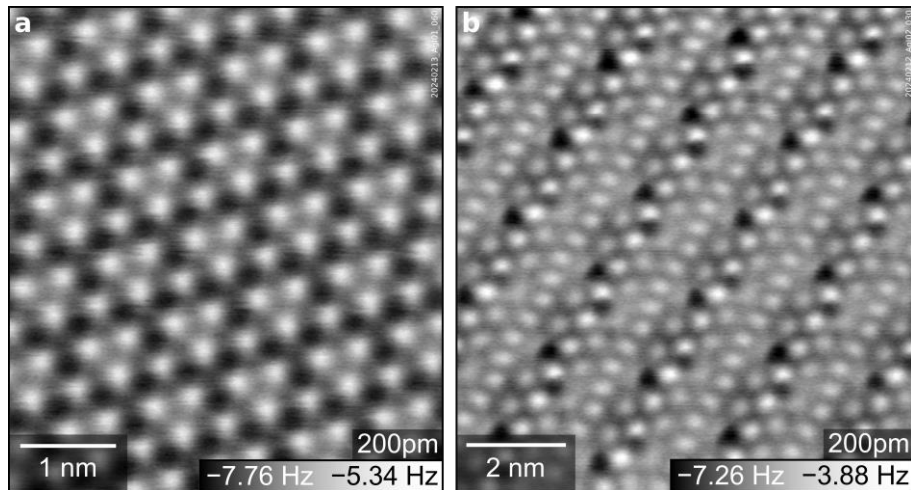


Figure 1. NC-AFM images of (a) Ag-terminated AgI(0001) and (b) I-terminated AgI(000-1) surfaces cleaved in ultrahigh vacuum, acquired in constant-height mode at 77 K. The Ag termination forms a (2×2) reconstruction and acts as an epitaxial template for hexagonal ice.