

Fig. 1 (a) Measurement setup. (b) Thermomechanical resonant response.

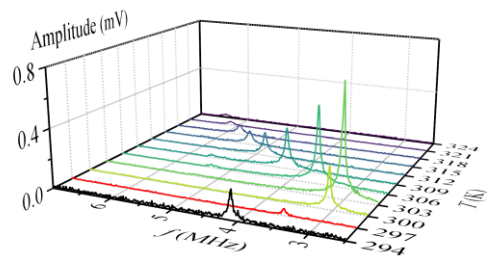


Fig.2 3D color plot of the resonant response of the device under different temperatures.

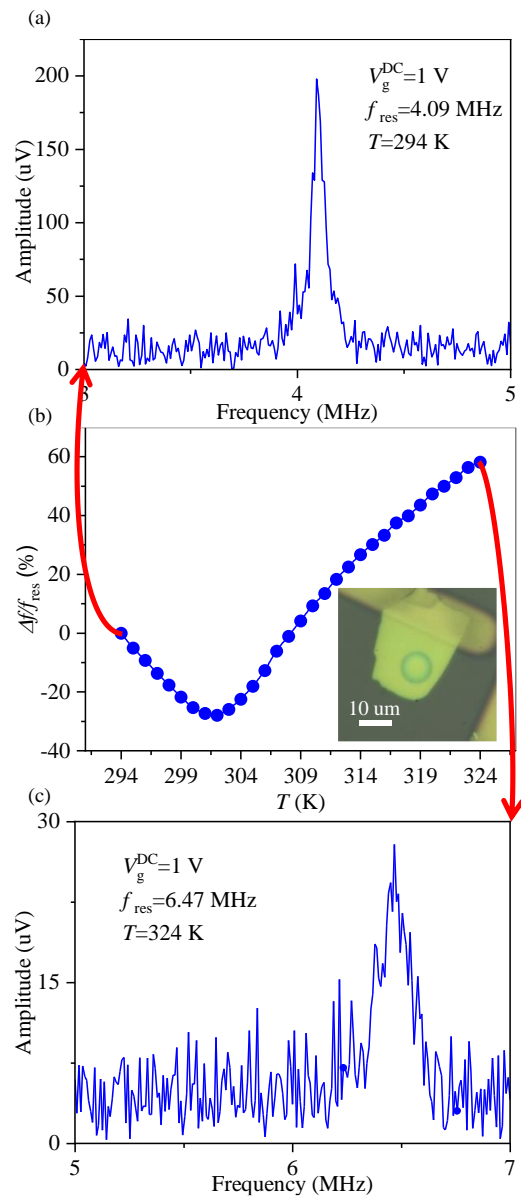


Fig.3 TCf measurement of a BiOI Resonator. (a) and (c) Driven resonances measured under different temperatures. (b) f_{res} shift under different temperatures. Inset: optical image of the device.