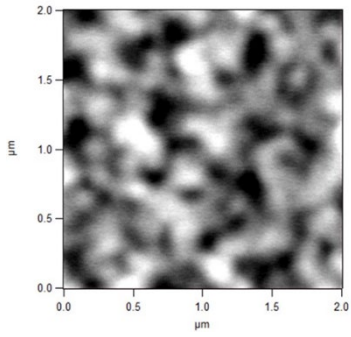


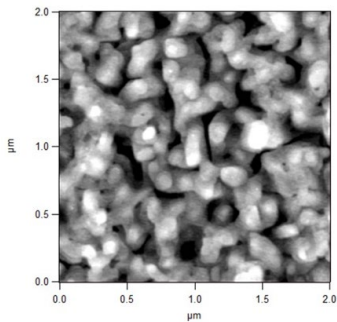
Supporting Information



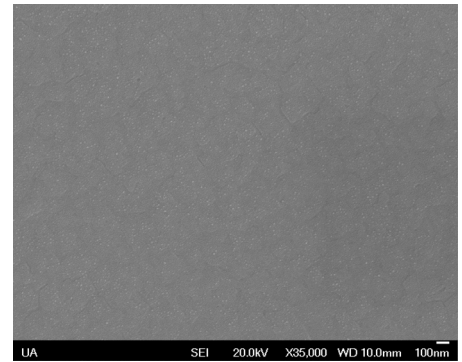
AFM image of stoichiometric BiFeO_3 film on STO, RMS roughness = 850 pm



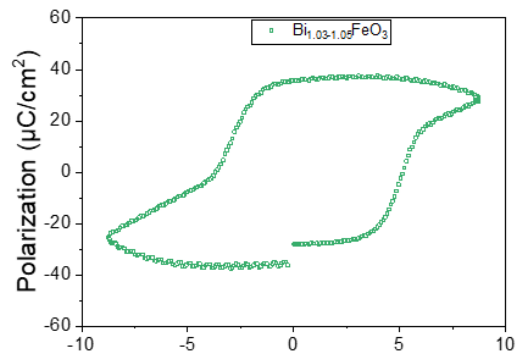
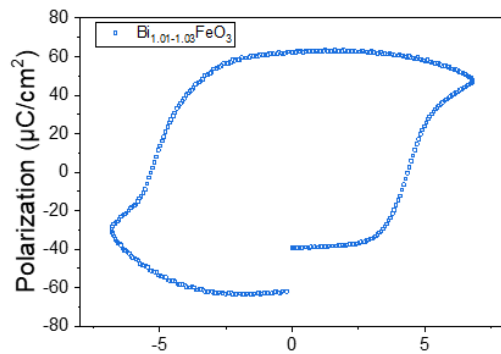
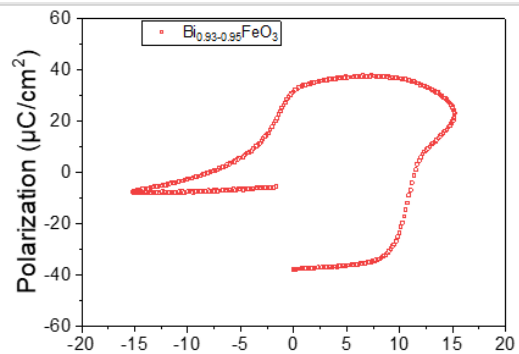
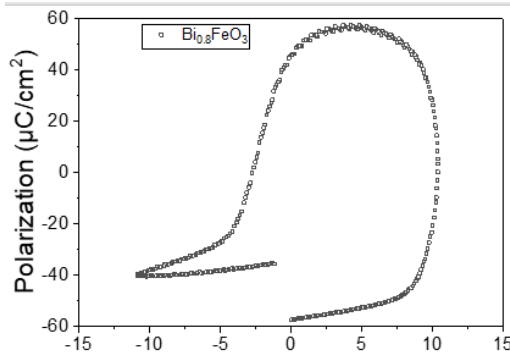
Corresponding SEM image of the film



AFM image of slightly Bi-rich (4-5%) BiFeO_3 film on SRO|STO, RMS roughness = 1.4 nm



Corresponding SEM image of the film



Ferroelectric hysteresis loops for BiFeO_3 films of different compositions measured at 25 kHz