

Figure 1: UHV STM images of (a) dry contact transferred (DCT) single-wall carbon nanotubes on a Si(100)2x1:H surface<sup>1</sup>, and (b) graphene nanostructure on a GaAs(110) surface<sup>2</sup>.

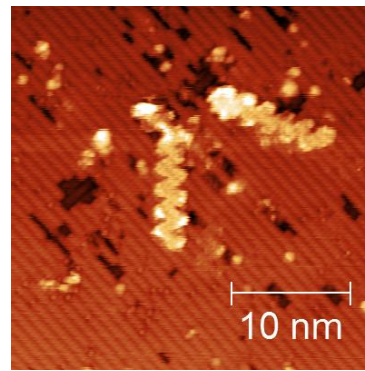


Figure 2: STM image of DCT chevron graphene nanoribbons on a Si(100)2x1:H surface<sup>3</sup>.

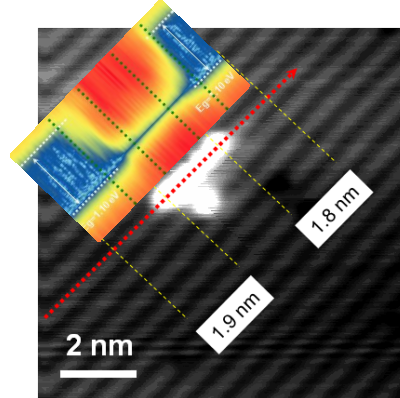


Figure 3: Metallic dangling bond wire (inset: STM spectroscopy) created by STM lithography on a Si(100)2x1:H surface<sup>4</sup>.

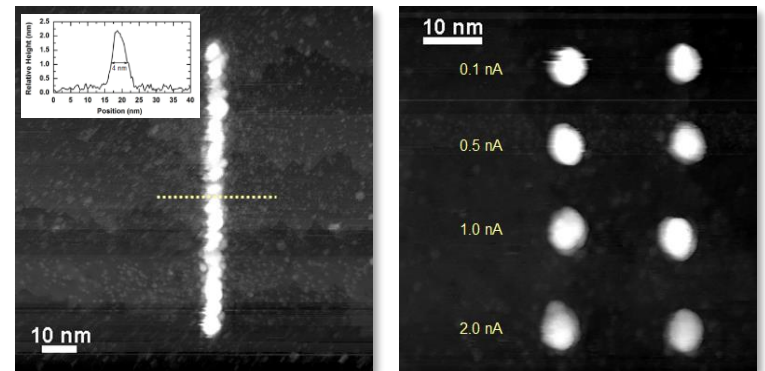


Figure 4: STM images of metallic hafnium diboride wire and dots on Si(100)2x1:H surfaces<sup>5</sup>.

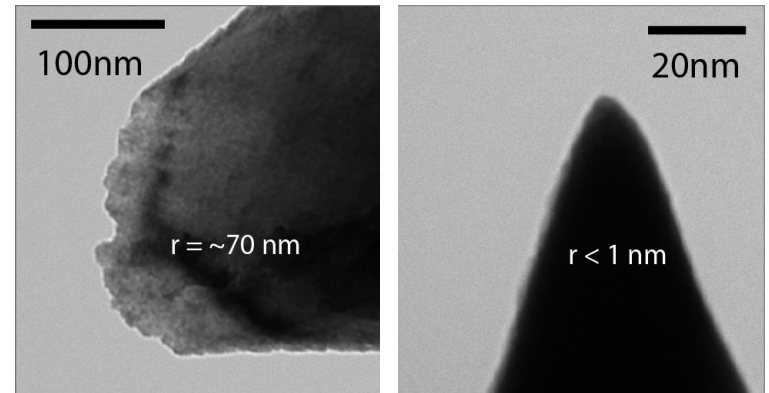


Figure 5: TEM images of a tungsten STM probe before (left) and after (right) field-directed sputter sharpening<sup>6</sup>.

## References

1. Albrecht, P.; Lyding, J., *Applied Physics Letters* **2003**, *83* (24), 5029-5031.
2. He, K. T.; Koepke, J. C.; Barraza-Lopez, S.; Lyding, J. W., *Nano Letters* **2010**, *10* (9), 3446-3452.
3. Radocea, A.; Sun, T.; Vo, T.; Sinitskii, A.; Aluru, N.; Lyding, J., *Nano Letters* **2017**, *17* (1), 170-178.
4. Ye, W.; Min, K.; Martin, P.; Rockett, A.; Aluru, N.; Lyding, J., *Surface Science* **2013**, *609*, 147-151.
5. Ye, W.; Martin, P.; Kumar, N.; Daly, S.; Rockett, A.; Abelson, J.; Girolami, G.; Lyding, J., *Acs Nano* **2010**, *4* (11), 6818-6824.
6. Schmucker, S.; Kumar, N.; Abelson, J.; Daly, S.; Girolami, G.; Bischof, M.; Jaeger, D.; Reidy, R.; Gorman, B.; Alexander, J.; Ballard, J.; Randall, J.; Lyding, J., *Nature Communications* **2012**, *3*, 935.