

Table 1. Si & Sn precursors used in evaluation

Precursor	Si	Sn
	NSi-01	DTP-01
Structure	$ \begin{array}{c} \text{H} \quad \text{H} \quad \text{H} \\ \quad \quad \\ \text{N}-\text{Si}-\text{N}-\text{Si}-\text{N} \\ \quad \quad \\ \text{---} \quad \text{---} \quad \text{---} \end{array} $	-
B.P.	185°C	153°C
V.P.	10Torr @56°C	10Torr @41°C
Physical State	Liquid	Liquid

Fig 1. Deposition rate(a), refractive index and Sn concentration(b) by vapor pressure

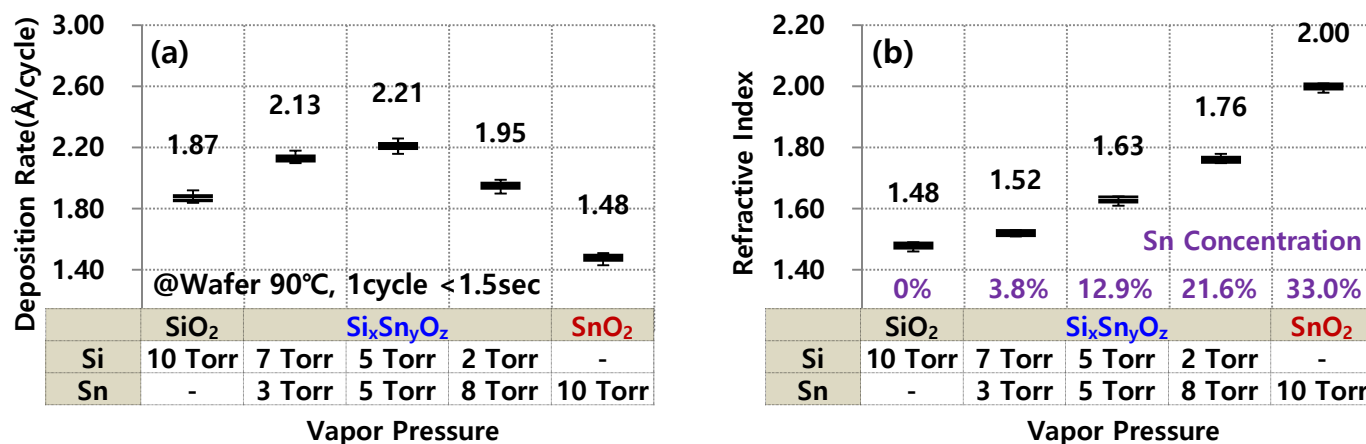


Fig 2. TEM Mapping according to composition

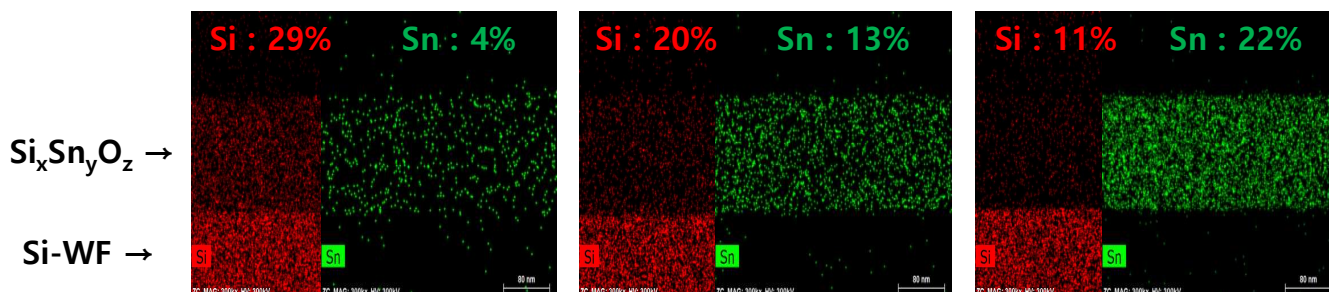


Fig 3. Stress(a) and film density(b) according to Sn concentration

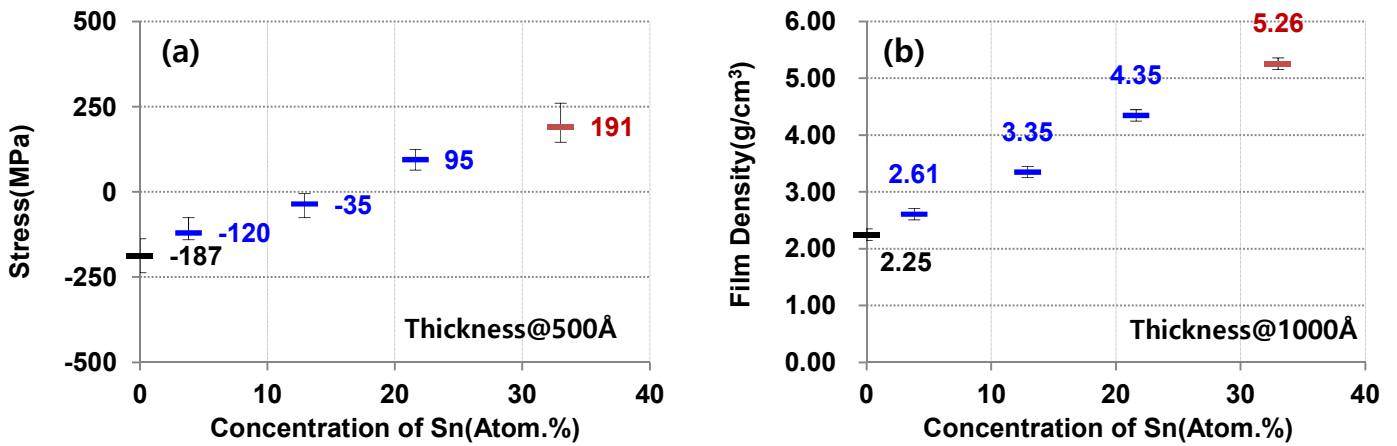


Fig 4. Transmittance(a) and WVTR(b) according to Sn concentration

