

Improved Metal Selectivity *via* Inherent Orthogonal ASD: Polymer ASD Improves Nucleation Inhibition for Metal ASD

*Hwan Oh, Hannah R. M. Margavio, Hyunwoo Yang, and Gregory N. Parsons**
North Carolina State University, 911 Partners Way, Raleigh, NC 27606 USA
gnp@ncsu.edu*

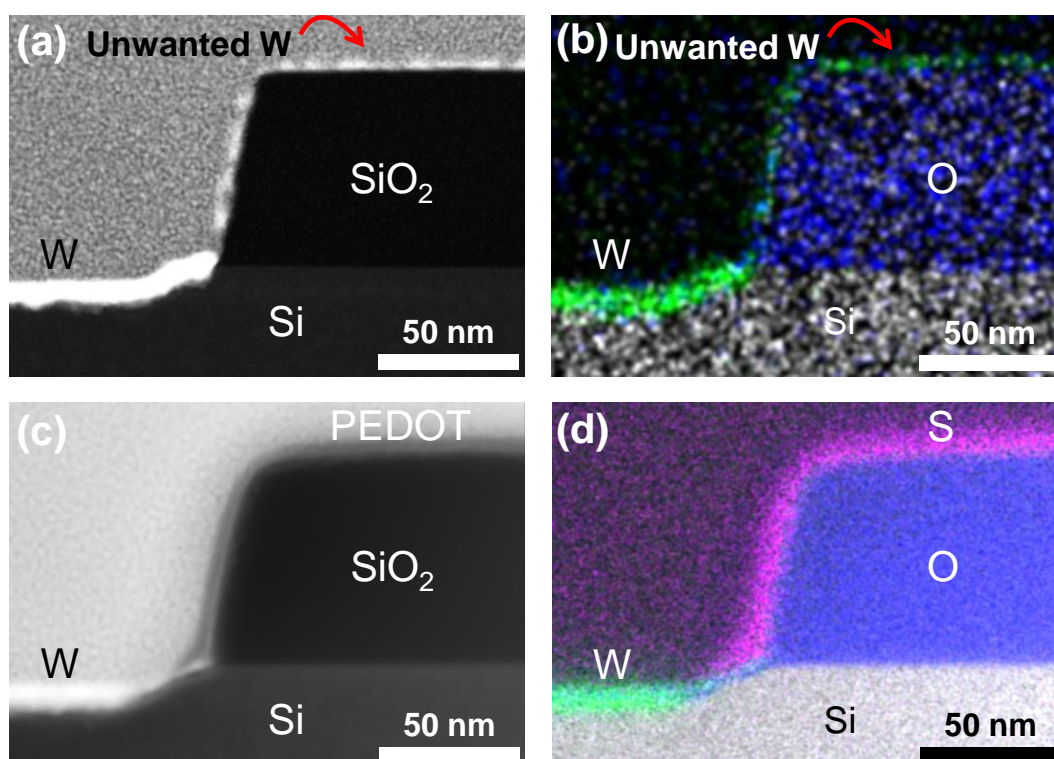


Figure 1. Cross-sectional STEM images after 10 cycles of W ALD (a) without PEDOT and (c) with pre-deposited PEDOT on SiO₂. STEM-EDX images corresponding to (b) panel (a) and (d) panel (c), respectively.

[1] C. Zhang, M. Leskela, M. Ritala, *Coatings*, **11**, 1124(2021)

[2] J. S. Kim,; G. N. Parsons, *Chem. Mater.* **33**, 9221-9230 (2021)

[3] B. Kalanyan, P. C. Lemaire, S. E. Atanasov, M. J. Ritz, G. N. Parsons, *Chem Mater*, **28**, 117-126 (2016)

