

Figure 1: Linearity of the PE-ALD processes: Film thickness in function of the amount of cycles for the HMDS, TEOS, BDEAS, APTES, 9 x TEOS: 1 x TTIP and 9 x HMDS : 1 x TTIP processes.

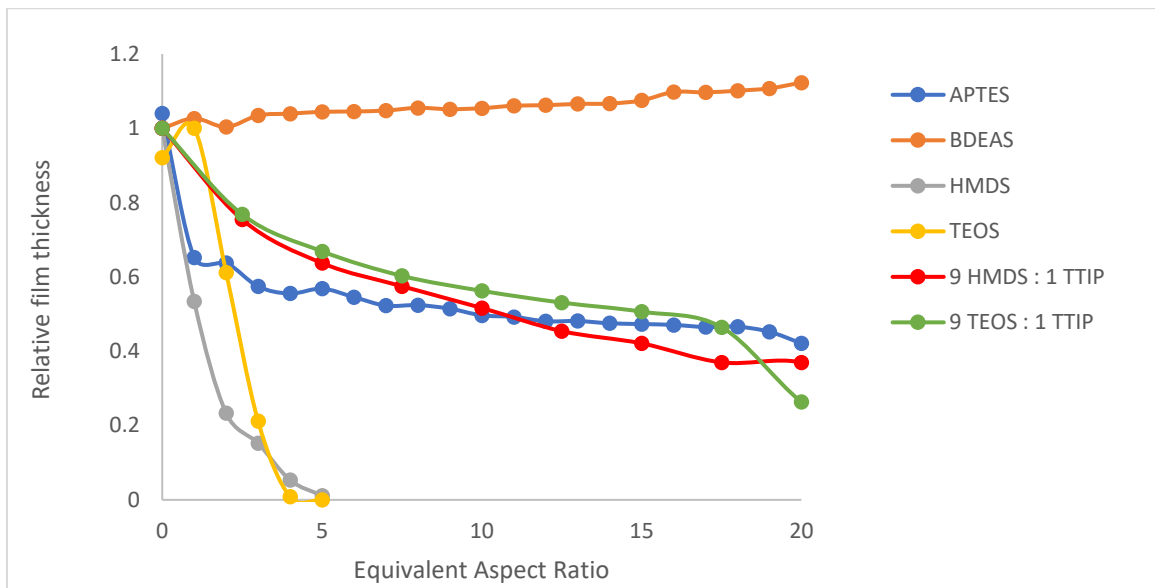


Figure 2: Conformality of the PE-ALD processes: Relative film thickness in function of the equivalent aspect ratio using macroscopic lateral structures for the HMDS, TEOS, BDEAS, APTES, 9 x TEOS: 1 x TTIP and 9 x HMDS : 1 x TTIP processes.