

Jan Tröger, Mikko Näsi, Tom Blomberg, Rik ter Veen, Nucleation of AlOx on ZrOx and ZrOx on AlOx studied by Low Energy Ion Scattering

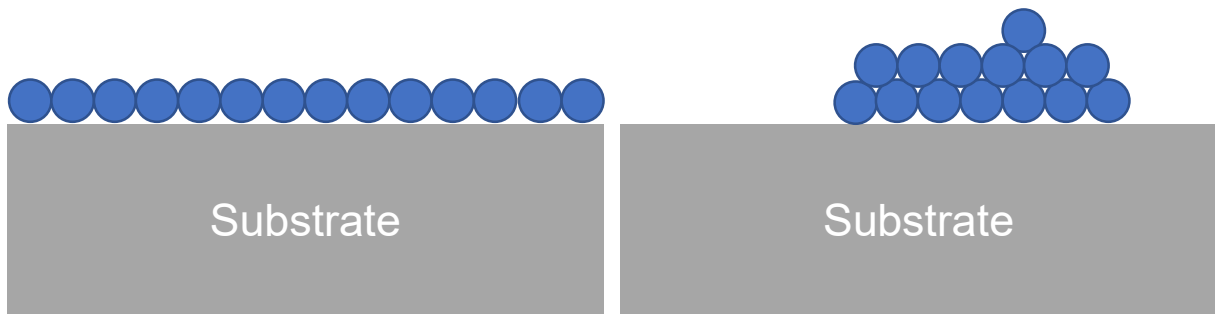


Figure 1: Closed monolayer and a half-closed double layer. Both have the same number of atoms per unit area, but the nucleation is different.

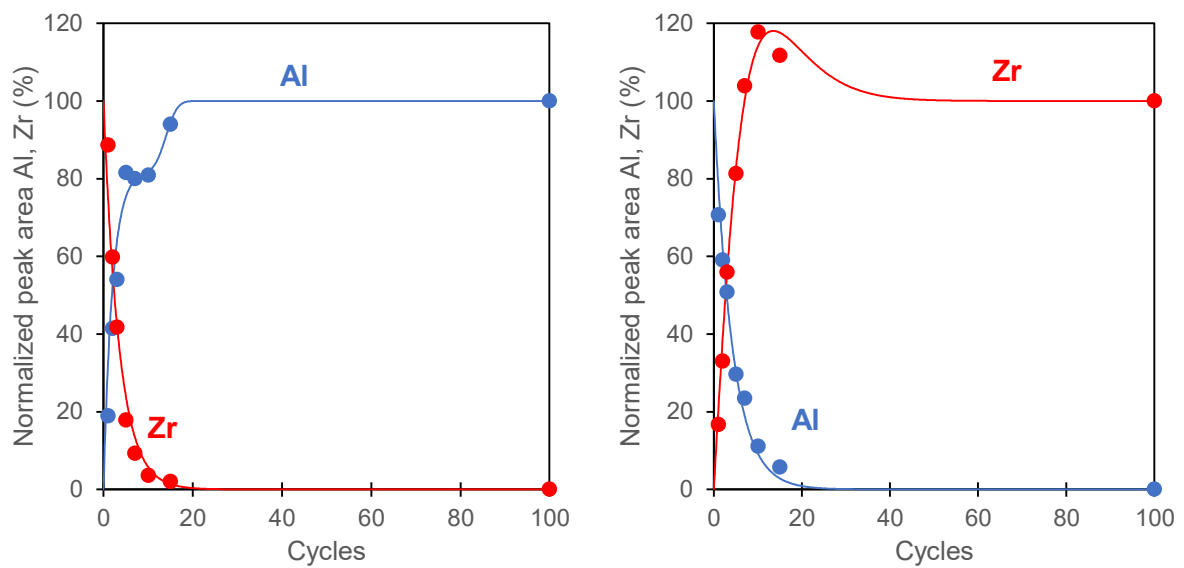


Figure 2: Normalized LEIS peak areas as a function of cycle number for AlOx deposition on ZrOx (left) and ZrOx deposition on AlOx (right)