

Supplementary material

Friction and wear properties of low-temperature metal oxides

Olli Ylivaara, Lauri Kilpi, Riina Ritasalo, Helena Ronkainen

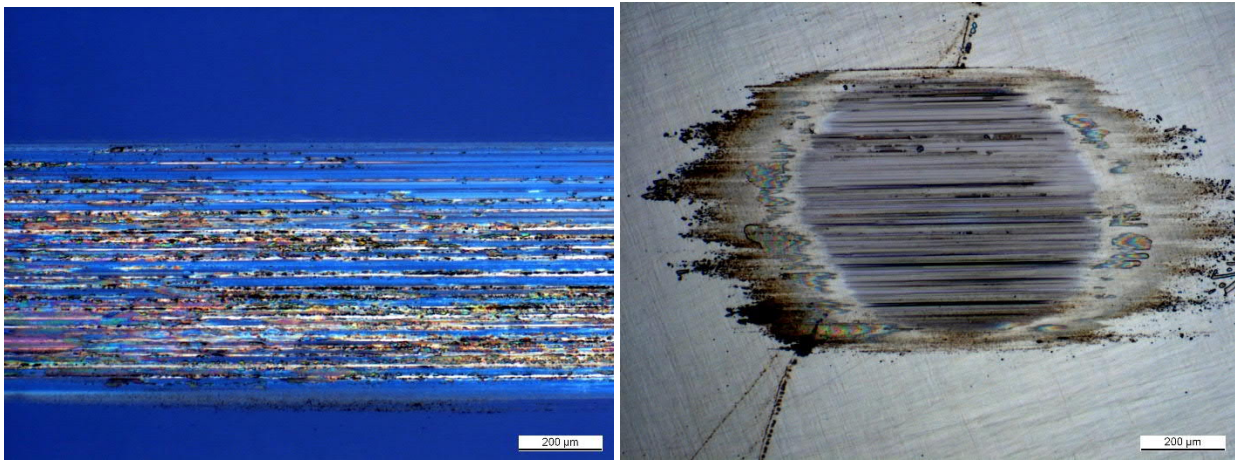


Figure 1. Wear surfaces of SiO<sub>2</sub> coated silicon sample and silicon counterpart. Visible tribolayer was formed on the ALD coated sample and some substrate silicon was visible as the SiO<sub>2</sub> was worn.

Acknowledgements: ULIMPIA project/PENTA under grant number PENTA-2017-Call2-16101-ULIMPIA