

Figure 1. Comparison of the known ALD processes for PbS with those ones presented in this work. Photographs show PbS films deposited using $Pb(dbda)$ on glass.

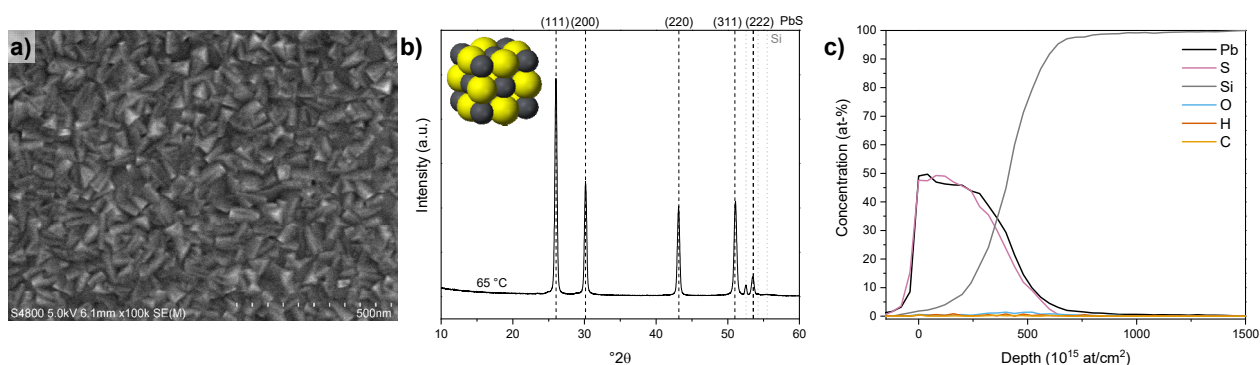


Figure 2. a) FESEM image, b) GI-XRD pattern and c) TOF-ERDA depth profile of a PbS film deposited using $Pb(btsa)_2$ and H_2S at 65 °C.